

MAG. NORTH 1962

NORRIS, R. FOWLER
D.B. 18 @ 912
P.B. 20 @ 72
TMS 30-28

JANICE K. HUTCHERSON
D.B. 18 @ 173
P.B. 15 @ 107
TMS 30-13

ANNIE BELLE & ED. SIMS JR.
D.B. 155- @ 408
P.B. 1 @ 109
TMS 31-23

HOYLE GARNER EST.
D.B. 18 @ 912
P.B. 20 @ 72
TMS 30-8

HOYLE GARNER EST.
D.B. 137 @ 22
P.B. 1 @ 109
TMS 31-4

LULA GARNER ET AL.
D.B. 120 @ 317
TMS 31-22

Plot BK 22 page 151

TRACT 1
55.91 AC. TOTAL
- 1.01 AC. RD. R/W
54.90 AC. NET

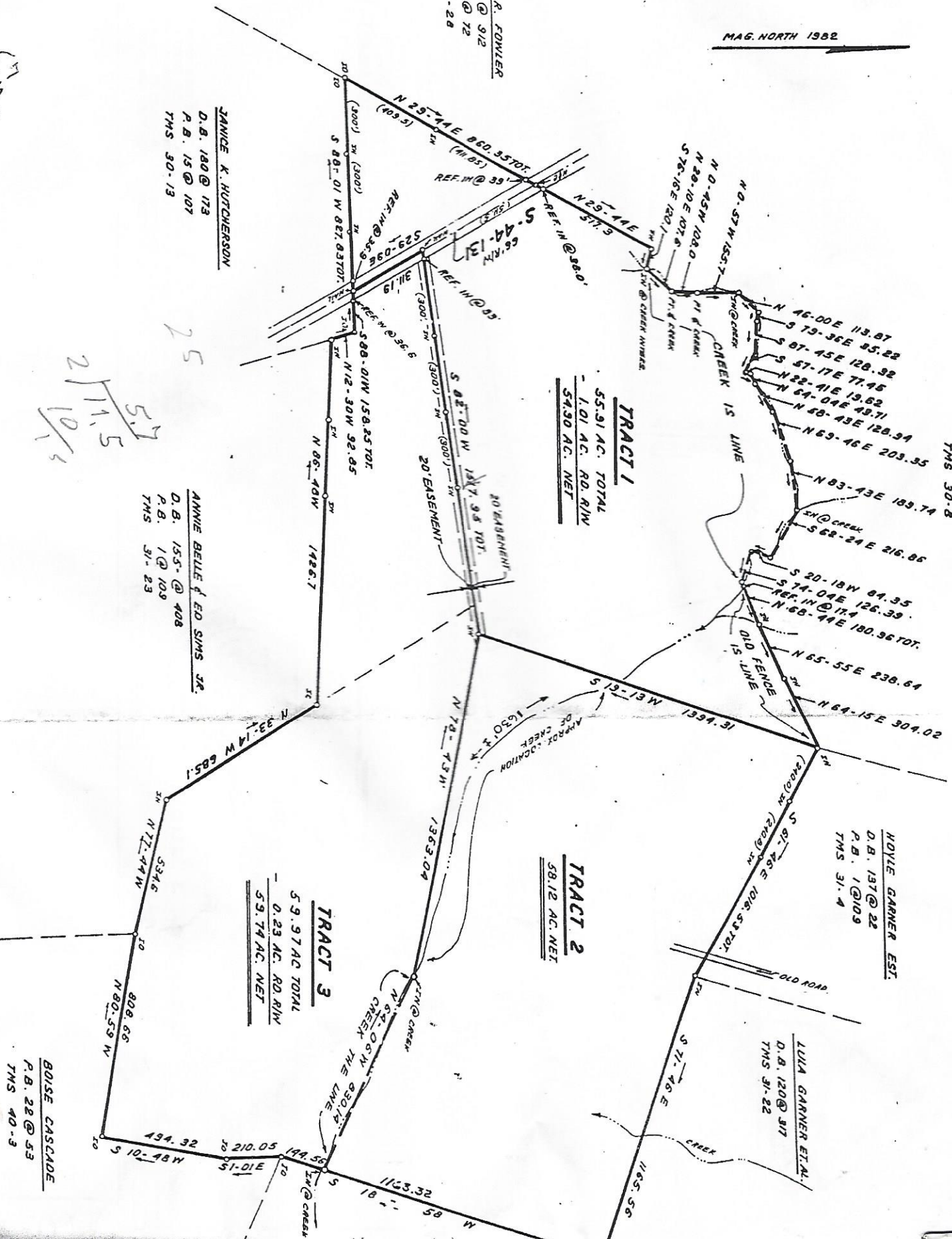
TRACT 2
58.12 AC. NET

TRACT 3
5.9.97 AC TOTAL
- 0.23 AC. RD. R/W
5.74 AC. NET

5.7
4.7
1.5

25
5.7
271.5
10/13

REF. D.B. 137 @ 22



BOISE CASCADE
P.B. 28 @ 53
TMS 40-3